

# OPHELIA



Ophelia is a dress that enchants with its soft, enveloping shades, a harmony of colours that blend gracefully, like reflections on water. Perfect for those who love ethereal and timeless beauty



**Yarn:** IRIDE col 4629

**Crochet:** n. 4 mm

**Weight:** 500g (4 balls)

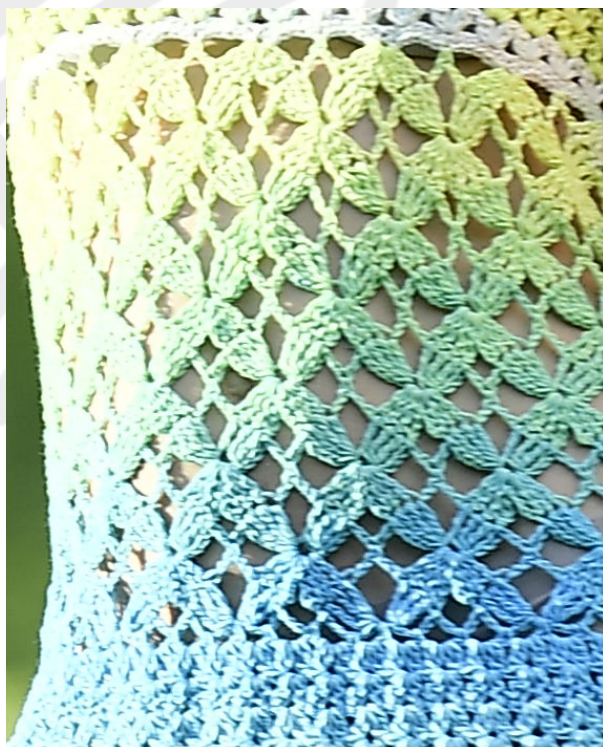
**Size:** S

**Stiches Used:** Chain (ch), Slip stitch (sl st), Single crochet (sc), Double crochet (dc), Treble crochet (tr)

## ABBREVIATIONS

- RS = right side
- WS = wrong side
- st(s) = stitch(es)
- rep = repeat
- ch = chain
- sc = single crochet
- dc = double crochet
- tr = treble crochet
- work = crochet
- next = next
- hook = crochet hook

# OPHELIA



## Notes

The dress is made of two panels: one for the front and one for the back. Each panel is worked starting from the central section, beginning at the top and working downward in Pattern A. Then, the skirt section is worked in Pattern B. Afterward, return to the foundation chains of the central section and work the bodice section upward in Pattern B. The sleeves are made separately using Pattern B and are joined to the dress at the end.

## INSTRUCTIONS

### FRONT PANEL

Central Section (Chart 1)

Ch 85 + 1 ch to turn.

Row 1: 1 sc in the 2nd ch from the hook and in each ch across, turn. [85 sc]

Continue working in Pattern A.

Row 2: Ch 1 (does not count as a stitch in this row and all following rows), 1 sc in the same st, \* ch 2, skip 5 sts, (3 tr, ch 3, 1 sc, ch 3, 3 tr) in next st, ch 2, skip 5 sts, 1 sc in next st \*; rep from \* to \* 6 more times, turn. [7 repeats]

Row 3: Ch 4 (counts as first tr in this and all following rows), \*(3 tr tog over next 3 tr, ch 3, 1 sc in the same st as the last tr, ch 5, 1 sc in the first of the next 3 tr, ch 3, 3 tr tog, working the first leg into the same tr as the previous sc, and the next two legs into the following 2 tr) \*; rep from \* to \* 7 times, turn.

Row 4: Ch 4, 3 tr in the edge tr, \* ch 2, 1 sc in the ch-5 sp, ch 2, (3 tr in the loop between the two groups of 3 tr tog, ch 3, 1 sc in the same loop, ch 3, 3 tr in the same loop) \*; rep from \* to \* 5 more times, ch 2, 1 sc in the ch-5 sp, ch 2, 4 tr in the 4th ch from the previous row (edge tr), turn.

Row 5: Ch 1, 1 sc in the first st, ch 5, 3 dc tog over the next 3 tr, \*(3 dc tog over the next 3 tr, ch 3, 1 sc in the same st as the last dc, ch 5, 1 sc in the first of the next 3 tr, ch 3, 3 dc tog, working the first leg into the same tr as the previous sc, and the next two legs into the following 2 tr) \*; rep from \* to \* 6 times, 3 dc tog over the last 3 tr, ch 5, 1 sc in the turning ch from the previous row, turn.

Rows 6-15: Continue following the chart, repeating the pattern from Row 2 to Row 5.

### Skirt Section

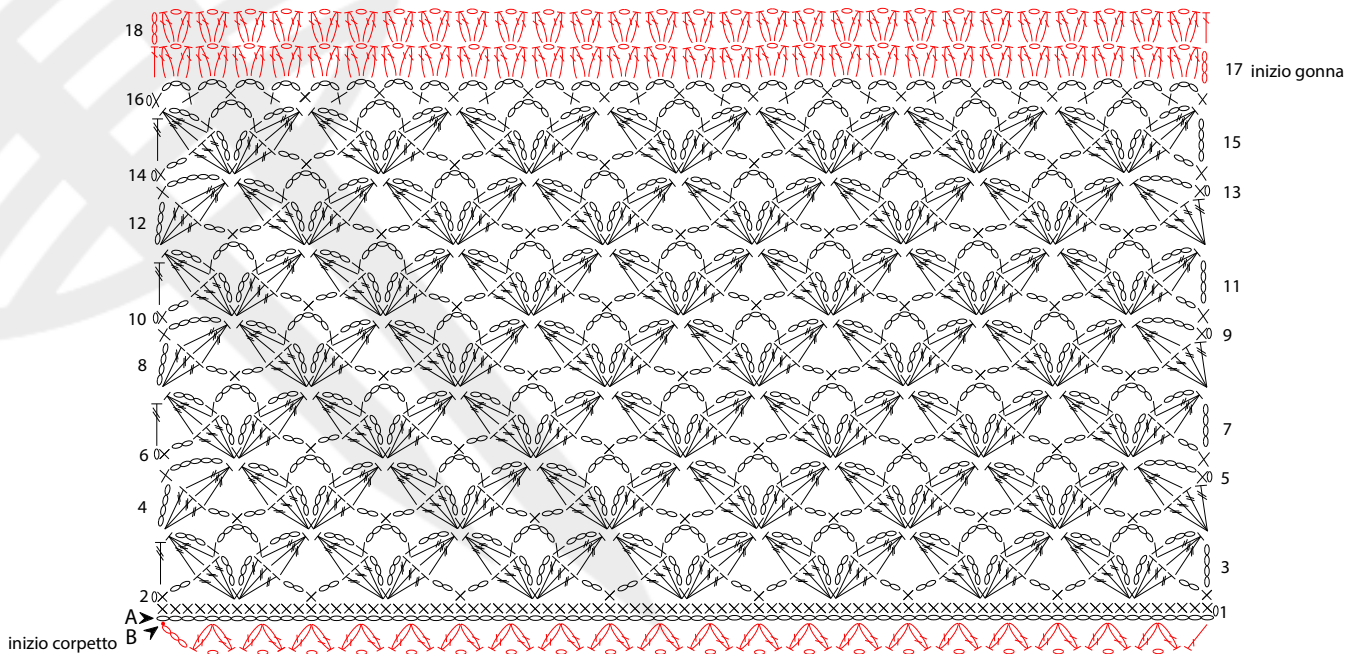
Row 16: Ch 1, 1 sc in the first st, \*(ch 4, 1 sc in next ch-1 sp, ch 3, 1 sc in next ch-5 sp, ch 3, 1 sc in next ch-3 sp, ch 3, 1 sc in the loop between the next two groups of 3 dc tog) \*; rep from \* to \* 7 times, working the last sc into the 4th ch of the turning ch from the previous row, turn.

Row 17: Ch 3 (counts as edge st), \*(2 dc tog, ch 1, 2 dc tog) in each next ch-3 sp; 1 dc in last sc (edge st), turn. [28 V-stitch groups + 2 edge sts]

# OPHELIA



Schema 1: sezione centrale davanti o dietro



Rows 18-36: Ch 3, \*(2 dc tog, ch 1, 2 dc tog) in each next ch-1 sp; 1 dc in last sc, turn. Fasten off.

## Bodice (Chart 2)

With a new ball of yarn, continue working along the opposite side of the foundation chain of the central section.

Row 1: With a 4 mm hook, join yarn with 1 sl st in the first ch of the central section (point B in Chart 1) and work ch 3 (counts as first dc), \* skip 3 ch, (2 dc tog, ch 1, 2 dc tog) in next ch \*; rep from \* to \* 19 more times, skip 3 ch, 1 dc in the last ch, turn. [20 V-stitch groups + 2 edge sts]

Continue working in Pattern B, following Chart 2.  
Rows 2-10: Ch 3, \*(2 dc tog, ch 1, 2 dc tog) in each next ch-1 sp; 1 dc in last sc, turn.

Rows 11-13: Decrease 1 st on both sides as indicated in Chart 2.

Rows 14-20: Work in Pattern B, keeping the same stitch count.

## Stitch Key

- ▲ Start
- △ End
- Chain Stitch
- Slip Stitch
- × Single Crochet
- ⌈ Double Crochet
- ⌈ 2 double Crochets closed together
- ⌈ 2 double Crochets closed together in the same stitch
- ⌈ Treble crochet
- ⌈ 3 treble crochets in the same stitch
- ⌈ 4 treble crochets in the same stitch
- ⌈ 3 treble crochets closed together

# OPHELIA



Rows 21-25: Work each side separately to shape the neckline, making decreases in Rows 21 and 22 as indicated.

Finish the panel with 2 rows of sc along the neckline edge. Fasten off and weave in the ends on the WS.

## BACK PANEL

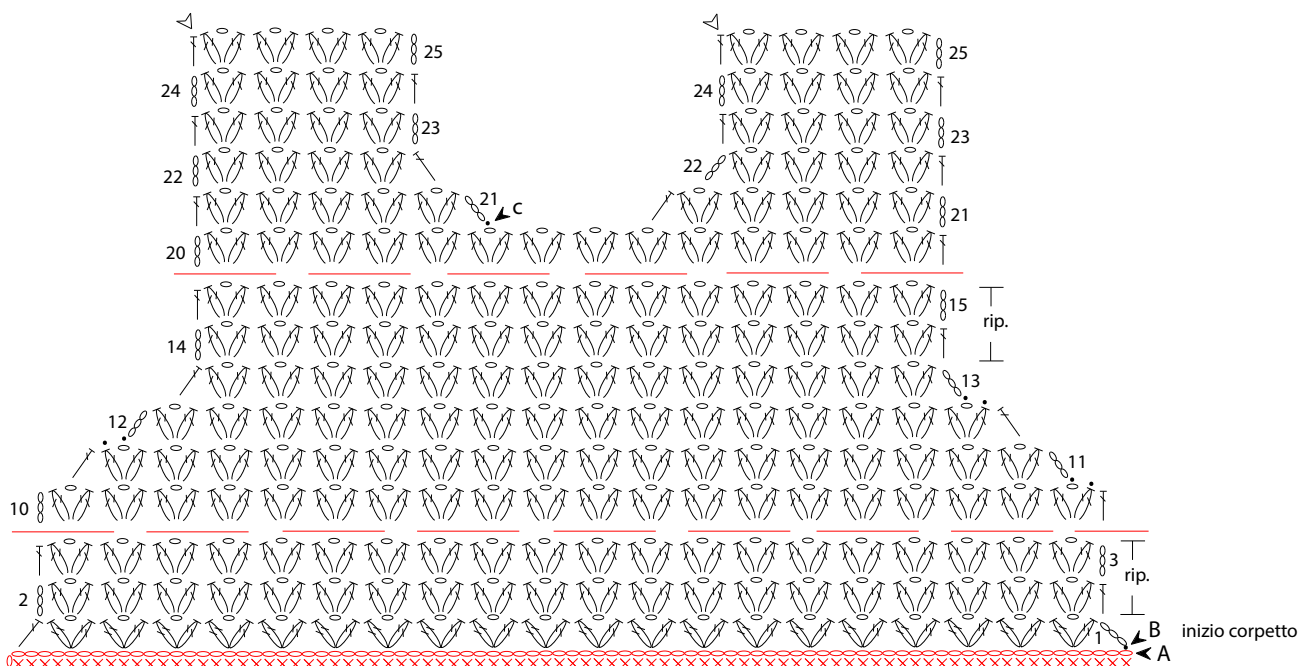
Work the central section, skirt, and the first 10 rows of the bodice the same as the front panel.

In Row 11 of the bodice, decrease 1 st on both sides, following Row 11 of Chart 2.

Row 12: Ch 3, \*(2 dc tog, ch 1, 2 dc tog) in each next ch-1 sp; 1 dc in the turning ch from the previous row.

Continue in Pattern B, repeating Row 12 until completing Row 25. Fasten off.

Schema 2: parte superiore davanti



# OPHELIA



## SLEEVES (Make 2)

Ch 52 + 1 to turn.

Row 1: 1 sc in the 2nd ch from the hook and in each ch to the end, turn. [52 sc]

Row 2: Ch 3 (counts as 1st dc, also in the following rows), skip 1 st, \* (2 dc closed together, ch 1, 2 dc closed together) in the next st, skip 3 sts \*, repeat from \* to \* 12 more times, skipping 1 sc in the last repetition, 1 dc in the last sc, turn.

Continue in pattern B following chart 3.

Rows 3 to 18: Repeat rows 3 and 4 of the chart.

Rows 19 to 26: Continue in pattern, increasing by half a V-stitch group on both sides in each row as indicated.

Rows 27 to 34: Work with the same number of stitches. [1 edge st, 21 V-stitch groups, 1 edge st]

Rows 35 to 42: Continue in pattern, decreasing 1 motif on each side in rows 36, 37, 40, and 42 as indicated.

Rows 43 and 44: Work with the same number of stitches. Fasten off. [Ch 3, 11 V-stitch groups, 1 dc]

On the RS, finish the armhole edge with 1 row of sc evenly. Fasten off.

## ASSEMBLY AND FINISHING

Sew all seams on the RS.

Start by attaching the sleeves to the shoulders with 1 row of sc evenly, leaving the shoulders open: for each sleeve, join the side edges of the armhole (from row 35 to row 45) to the corresponding edges of the front and back armhole shaping (from row 11 to row 21), leaving free the top edge of the 11 V-stitch groups in row 45 of the sleeve and the side edges of the last 4 rows of the front and back.

Join the right shoulder edges (front and back) with sc; leave the left shoulder open.

Work 1 row of sc on the RS to join the side seams of the front and back along the bodice and skirt, then join the underarm seams.

On the RS, work a round of sc along the edges of the front neckline, front shoulder, right shoulder opening, back shoulder, and back neckline. Finish the left shoulder opening the same way.

Weave in ends.

Sew 2 buttons on the back edge of the right shoulder and use the spaces between stitches of the right front shoulder as buttonholes.

# OPHELIA



Schema 3: manica

